


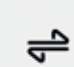




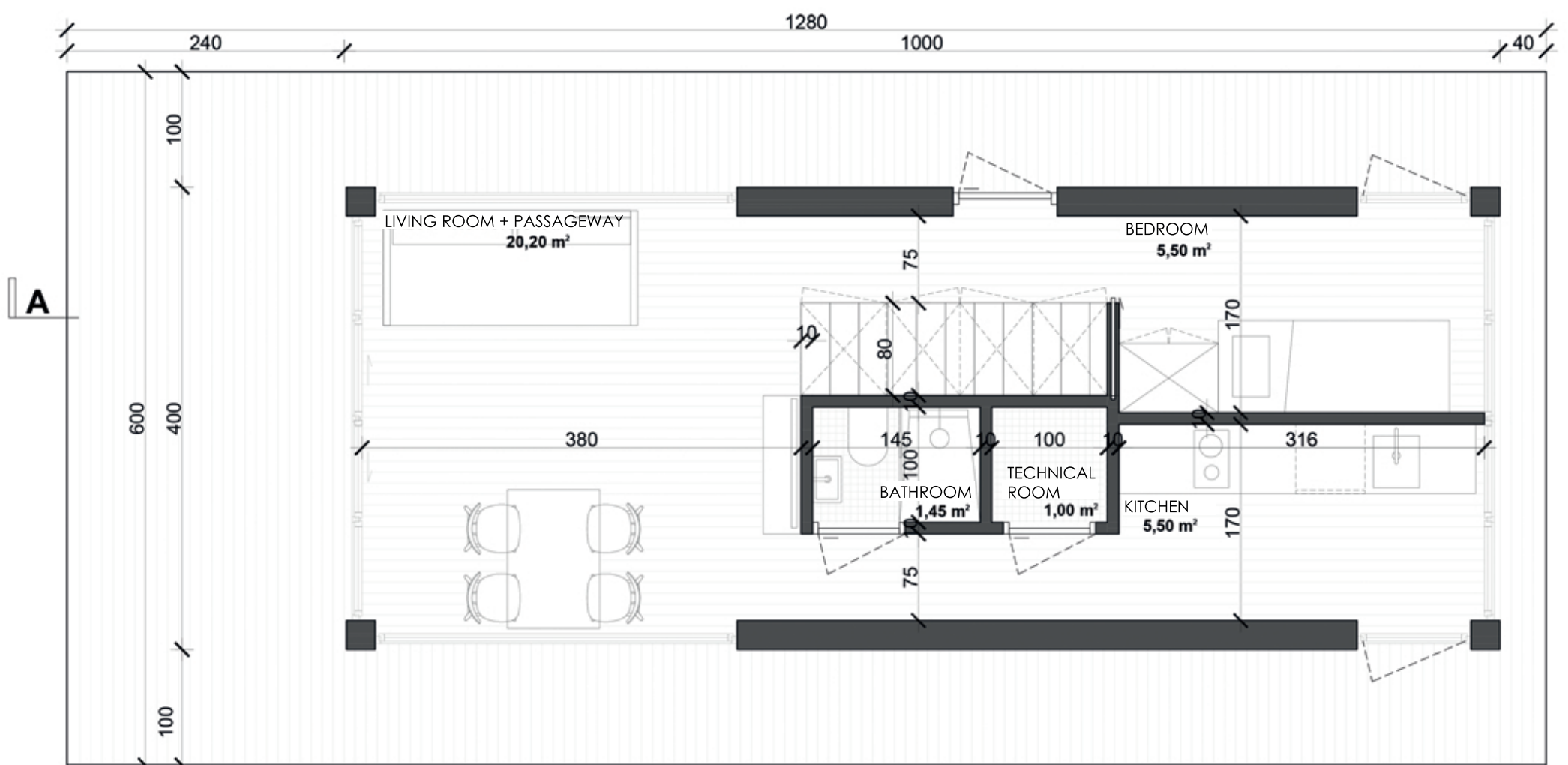
ATICO II

TECHNICAL INFORMATION

Platform	House	
Length: 12,8 m	Length: 10 m	Height: 5,44 m (to the top)
Width: 6 m	Width: 4 m	Number of places to sleep: 5 (with possibility of increasing)
Height: 0,75 m	Number of storeys: ground floor + attic	Terrace area on the ground floor: 36,8m ²
Draught: ca. 0,38 m	Ground floor area: 40 m ²	Season of use: all year
Area: 76,8 m ²	Attic area: 40 m ²	

-  **STANDARD FURNISHING**
-  **PREMIUM FURNISHING**
-  **AUTONOMIC FURNISHING**
-  **MOBILE FURNISHING**

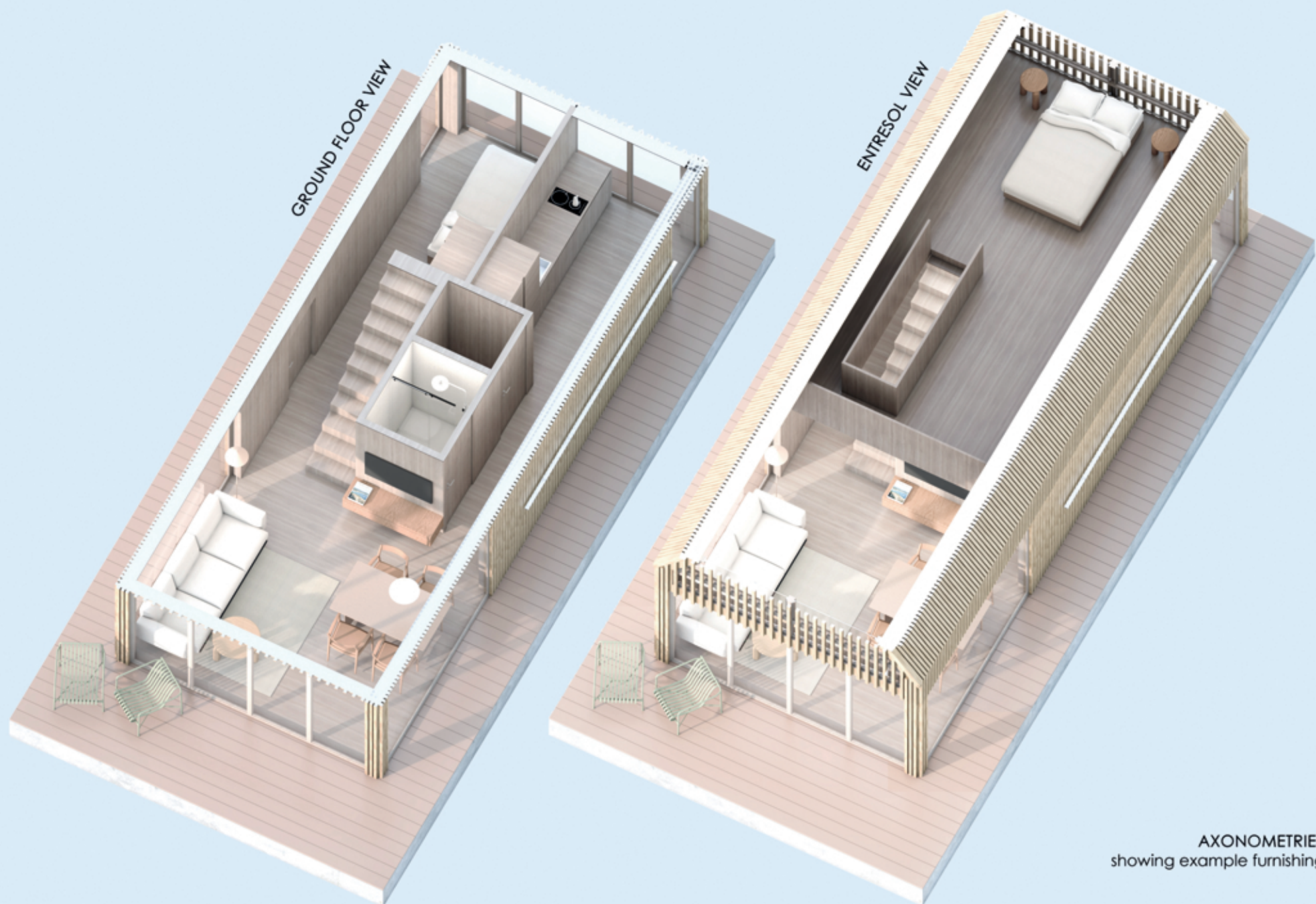
details available on the website: www.aqhome.pl



GROUND FLOOR PLAN



DESIGNALL LLC Group
36, Świerkowa Str., 10-174 Olsztyn
kontakt@designall.pl, tel. +48 791 501 502



AXONOMETRIES
showing example furnishing

STANDARD FURNISHING

Containers

for clean and waste water

Installations

floor heating
hot water
household batteries
port connection with charger
marine toilet with connection to the system

Finishing

interior floors
exterior floor of the lower deck
door and window joinery

Belaying elements

front and rear railings
water ladder

Fire extinguishing equipment

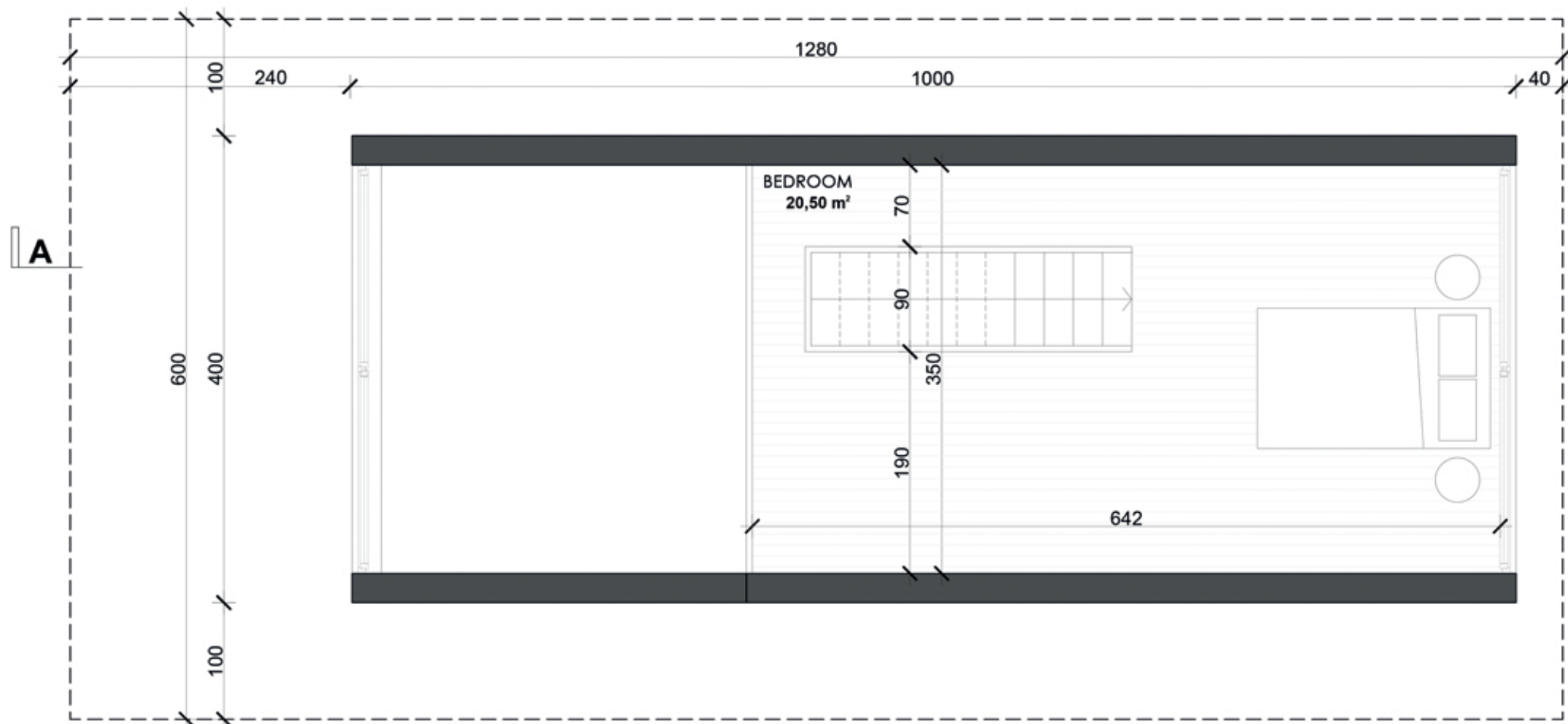
at least 2 fire extinguishers

Live-saving equipment

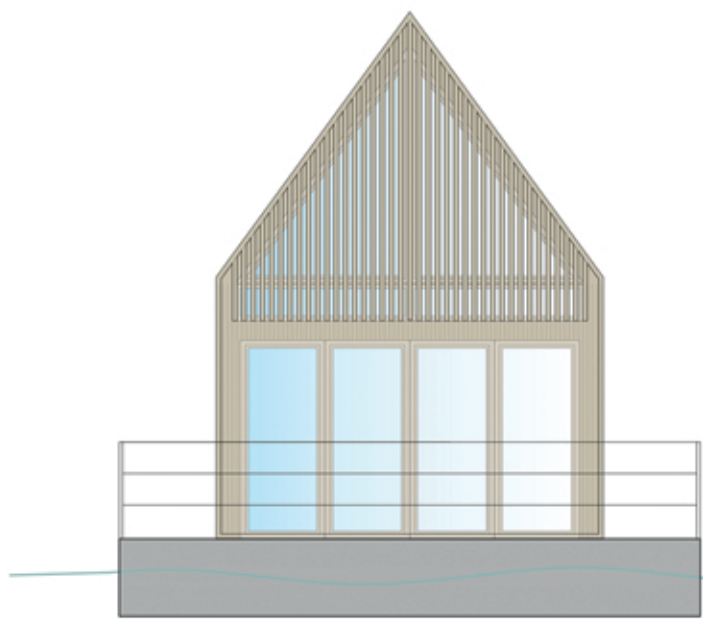
life jackets
Lifebuoy

Mooring equipment

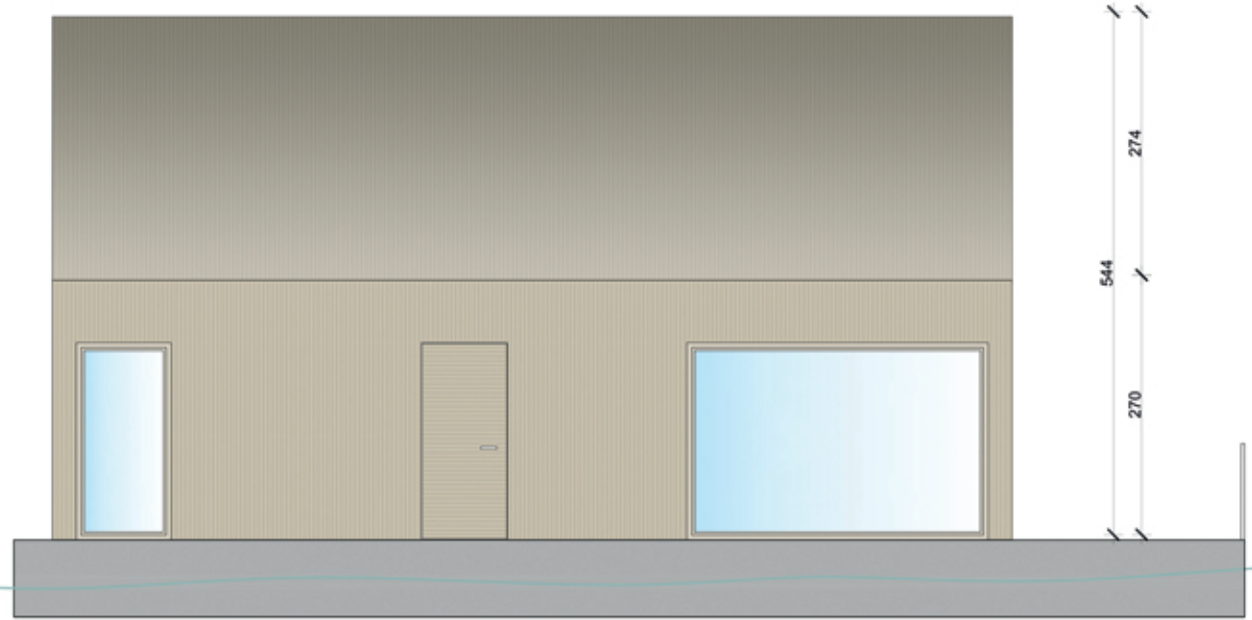
mooring lines
oar
fenders



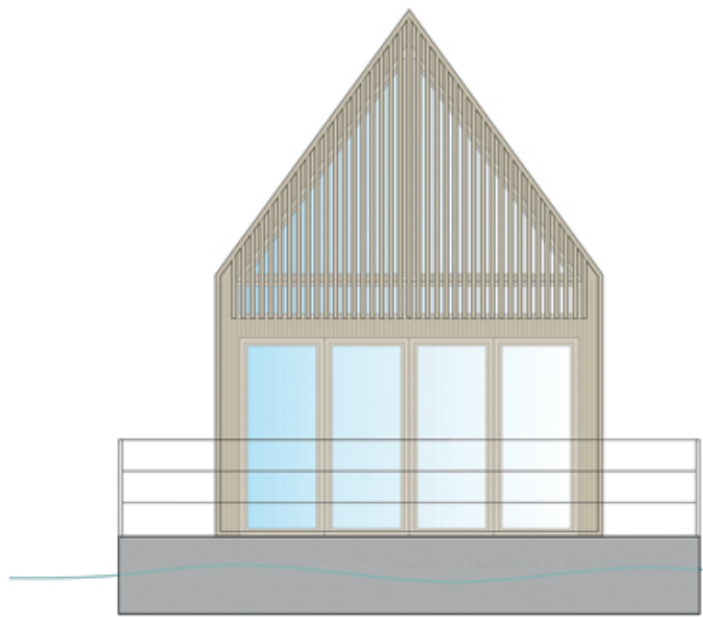
ENTRESOL PLAN



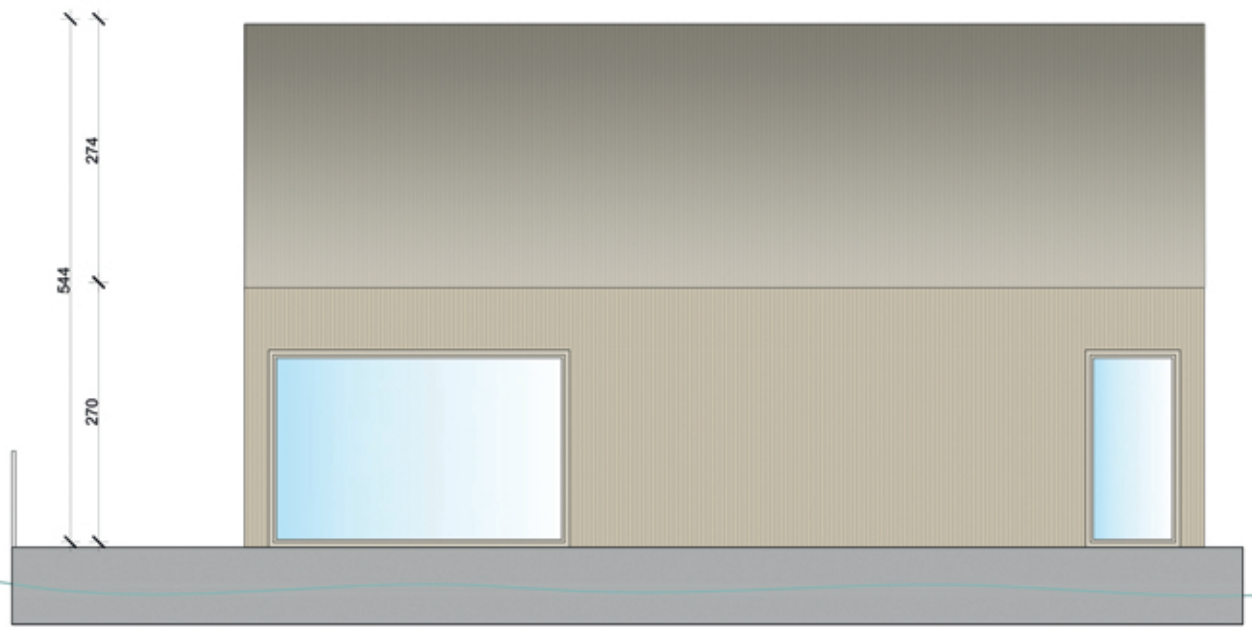
TOP ELEVATION 1



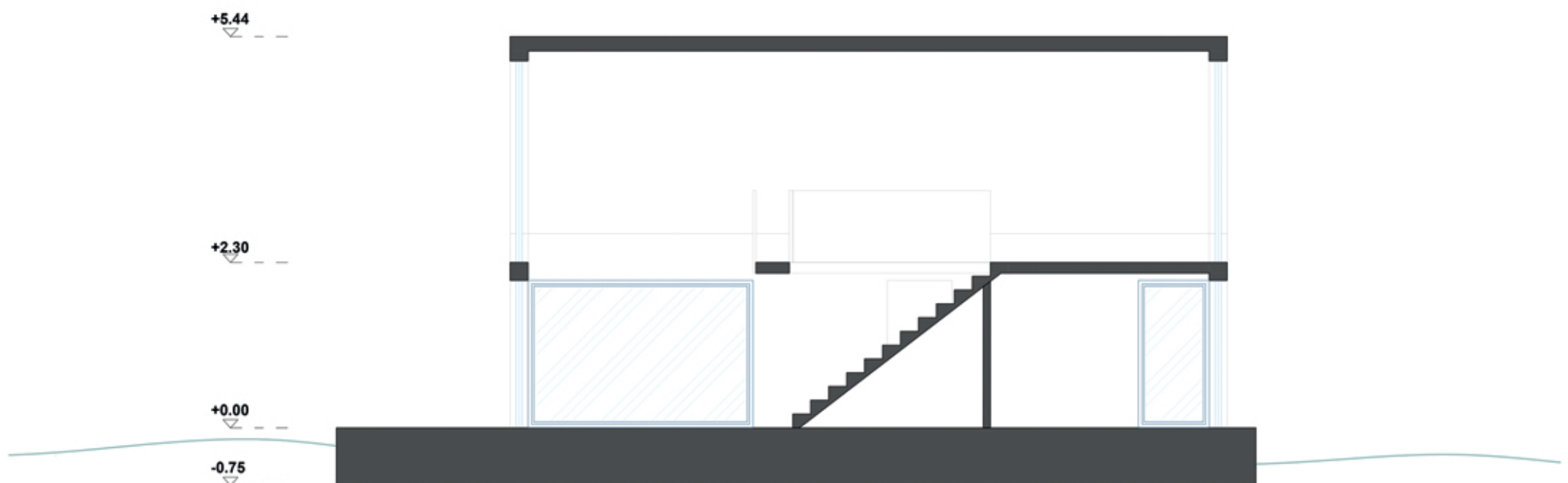
SIDE ELEVATION WITH THE MAIN DOOR



TOP ELEVATION 2



SIDE ELEVATION



SECTION A-A