

SAUNA BIG

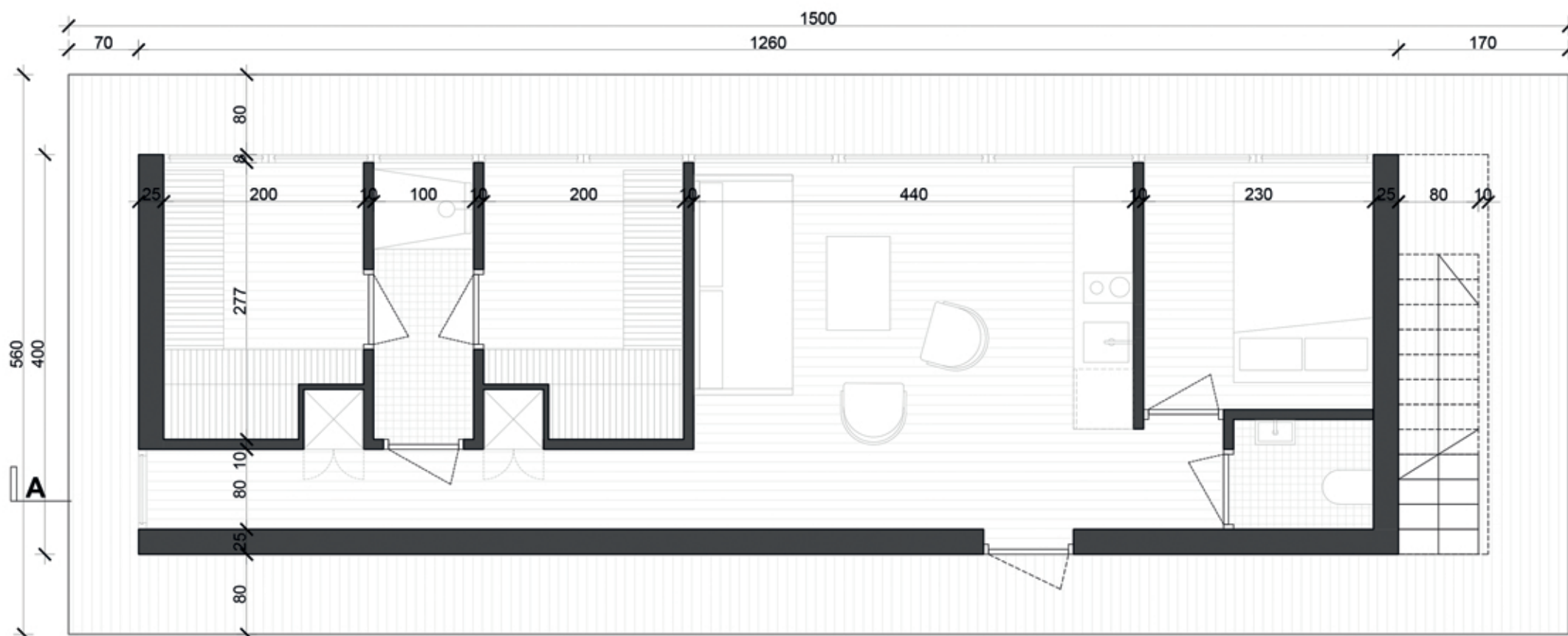
TECHNICAL INFORMATION

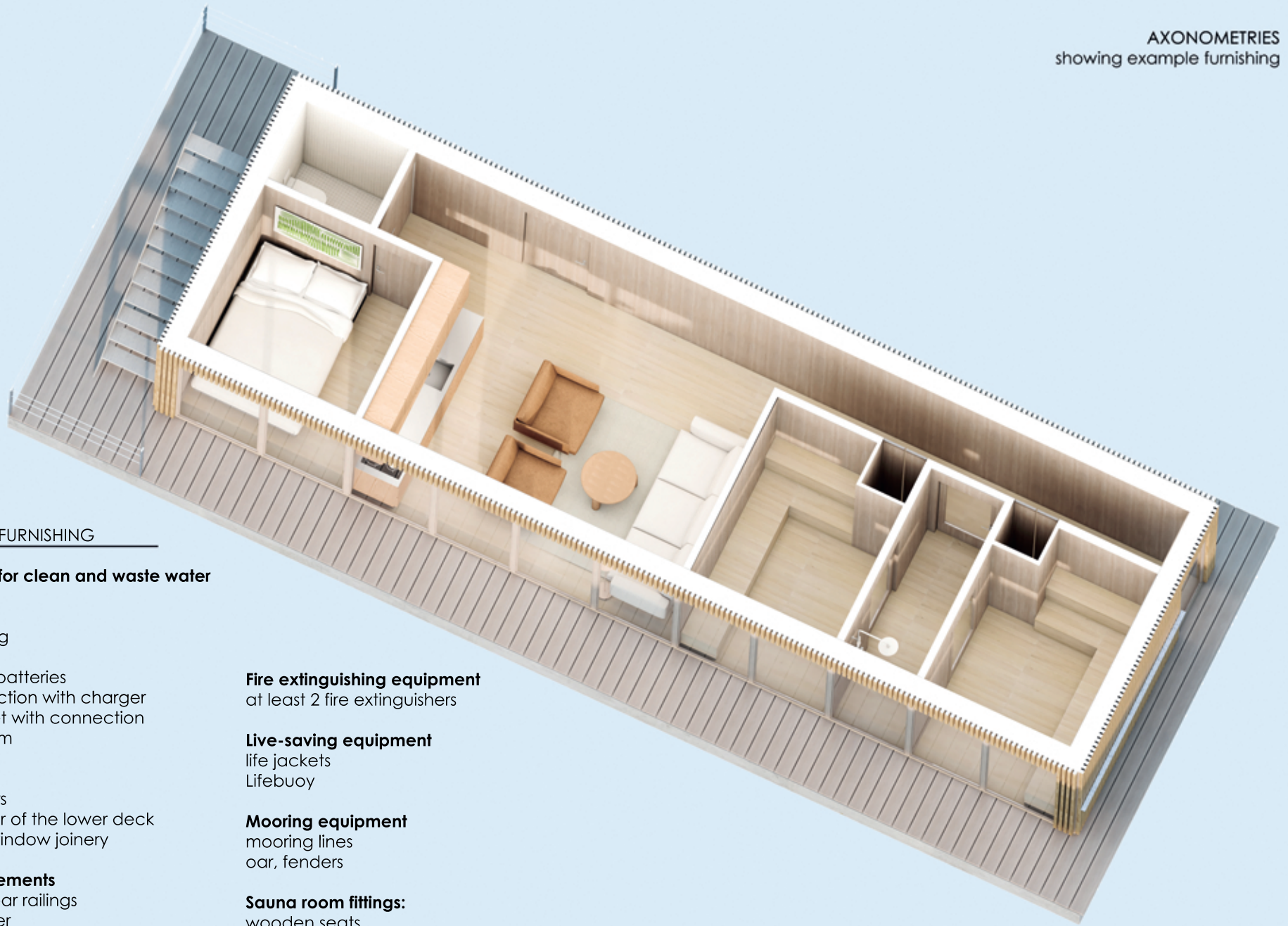
A house on the water with two rooms adapted for a Finnish (dry), wet or steam sauna. For greater comfort and usage possibilities, the facility has also been equipped with a spacious living room with a kitchenette, a double bedroom, a toilet and a shower. It is also worth mentioning the large terrace on the entire roof surface.

Platform	House	
Length: 15 m	Length: 12,6 m	Sauna: (two rooms, 5.1 m each)
Width: 5,6 m	Width: 4 m	Number of places to sleep: 4 (bedroom and living room)
Height: 0,75 m	Area: 50,4 m ²	Roof terrace area: 51,3 m ² (in the premium option)
Draught: ca. 0,38 m	Height: 2,6 m	Season of use: all year
Area: 84 m ²		

- ✓ **STANDARD FURNISHING**
- ☆ **PREMIUM FURNISHING**
- ♻️ **AUTONOMIC FURNISHING**
- 🚚 **MOBILE FURNISHING**

details available on the website www.aqhome.pl





STANDARD FURNISHING

Containers for clean and waste water

Installations

- floor heating
- hot water
- household batteries
- port connection with charger
- marine toilet with connection to the system

Finishing

- interior floors
- exterior floor of the lower deck
- door and window joinery

Belaying elements

- front and rear railings
- water ladder

Fire extinguishing equipment

- at least 2 fire extinguishers

Live-saving equipment

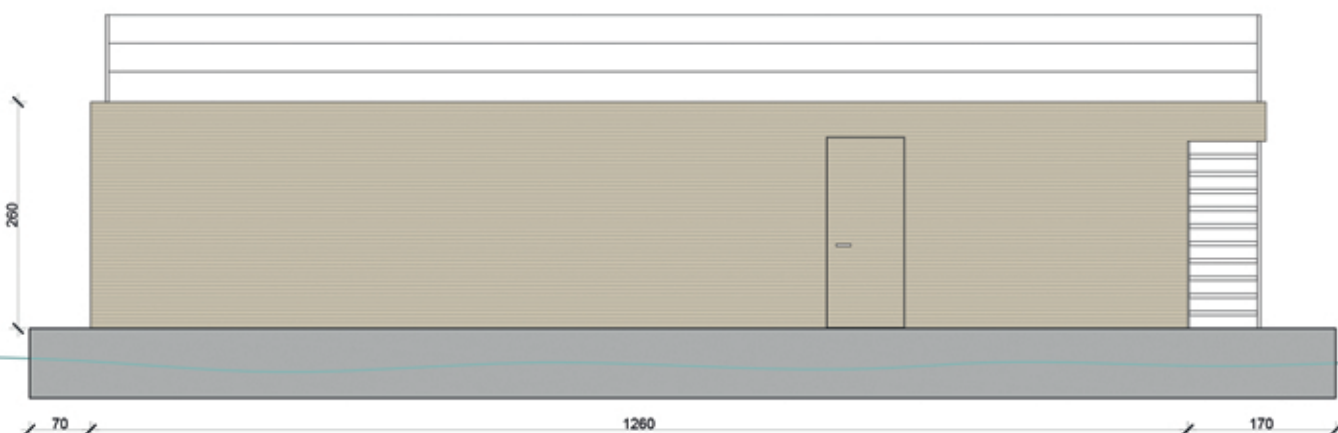
- life jackets
- Lifebuoy

Mooring equipment

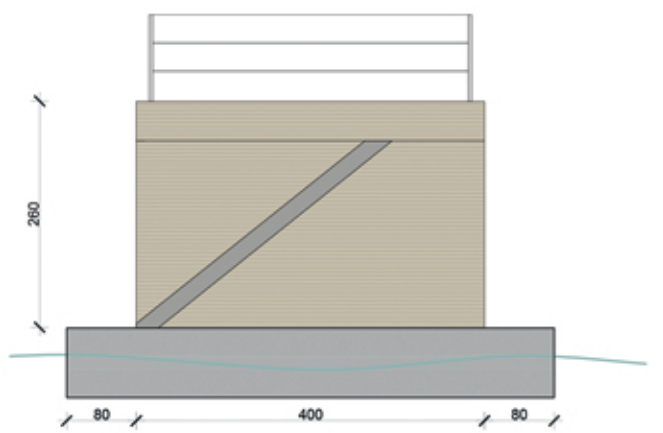
- mooring lines
- oar, fenders

Sauna room fittings:

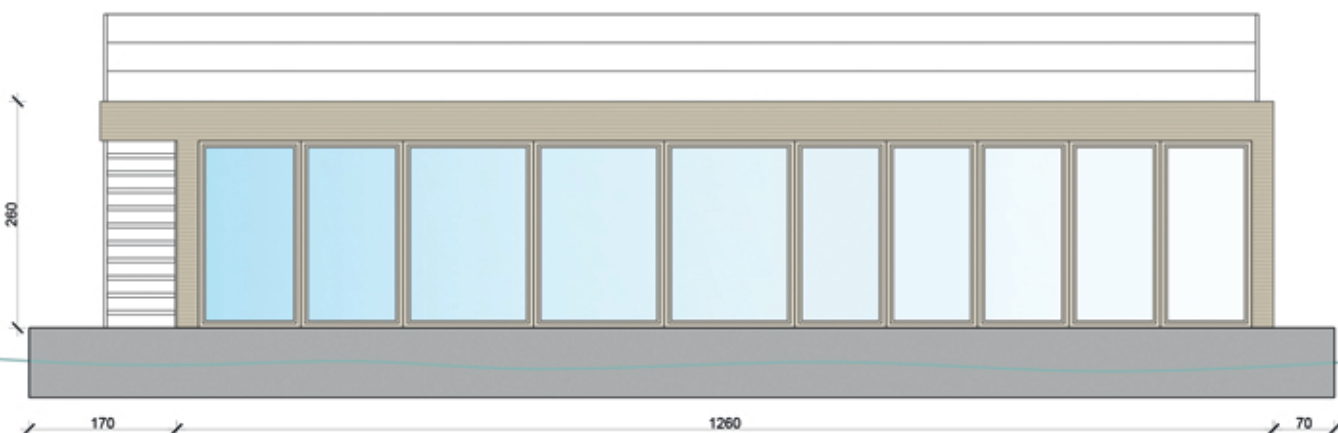
- wooden seats



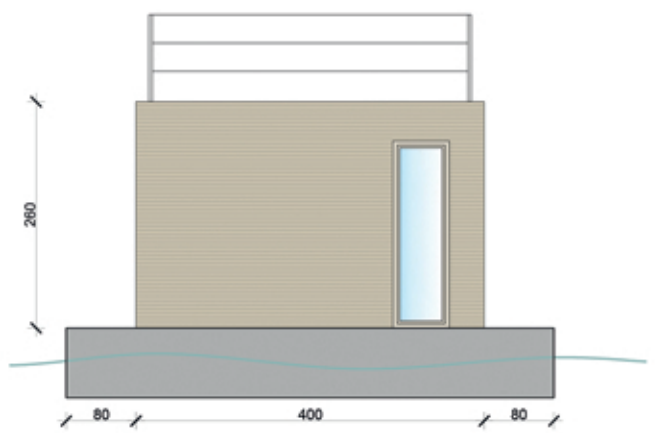
ELEVATION WITH ENTRANCE DOOR



SIDE ELEVATION WITH STAIRS TO THE TERRACE



FRONT ELEVATION WITH A LAKE VIEW



SIDE ELEVATION



SECTION A-A