

SAUNA PARTY

TECHNICAL INFORMATION

The facility is designed mainly for the function of a mobile sauna (dry or wet) with the necessary facilities – a bathroom with a shower and a lounge with a kitchenette or a bar. As is the case with any of our floating houses, it is possible to use the roof as an observation deck.

Platform

Length:
7,3 m

Width:
5 m

Height:
0,75 m

Draught:
ca. 0,25 m

Area:
36,5 m²

House

Length:
6 m

Width:
4 m

Area:
24 m²

Height:
2,6 m

Function:
Sauna (dry or wet)

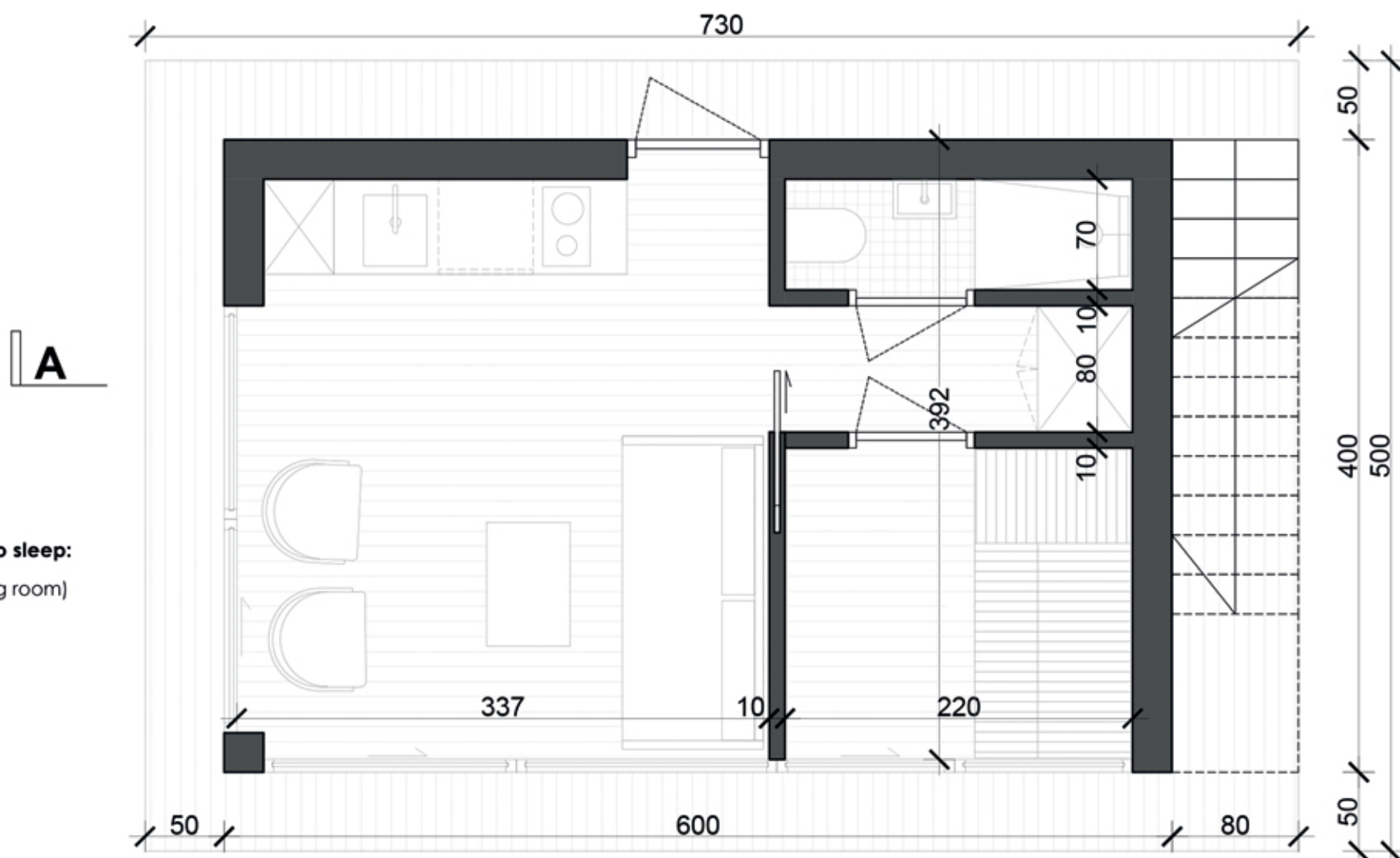
Number of places to sleep:
max 2
(sofa bed in the living room)

Roof terrace area:
24 m²

Season of use:
all year

- ✓ STANDARD FURNISHING
- ☆ PREMIUM FURNISHING
- ↻ AUTONOMIC FURNISHING
- 📦 MOBILE FURNISHING

details available on the website www.aqhome.pl



STANDARD FURNISHING

Containers for clean and waste water

Installations

- floor heating
- hot water
- household batteries
- port connection with charger
- marine toilet with connection to the system

Finishing

- interior floors
- exterior floor of the lower deck
- door and window joinery

Belaying elements

- front and rear railings
- water ladder

Fire extinguishing equipment

- at least 2 fire extinguishers

Live-saving equipment

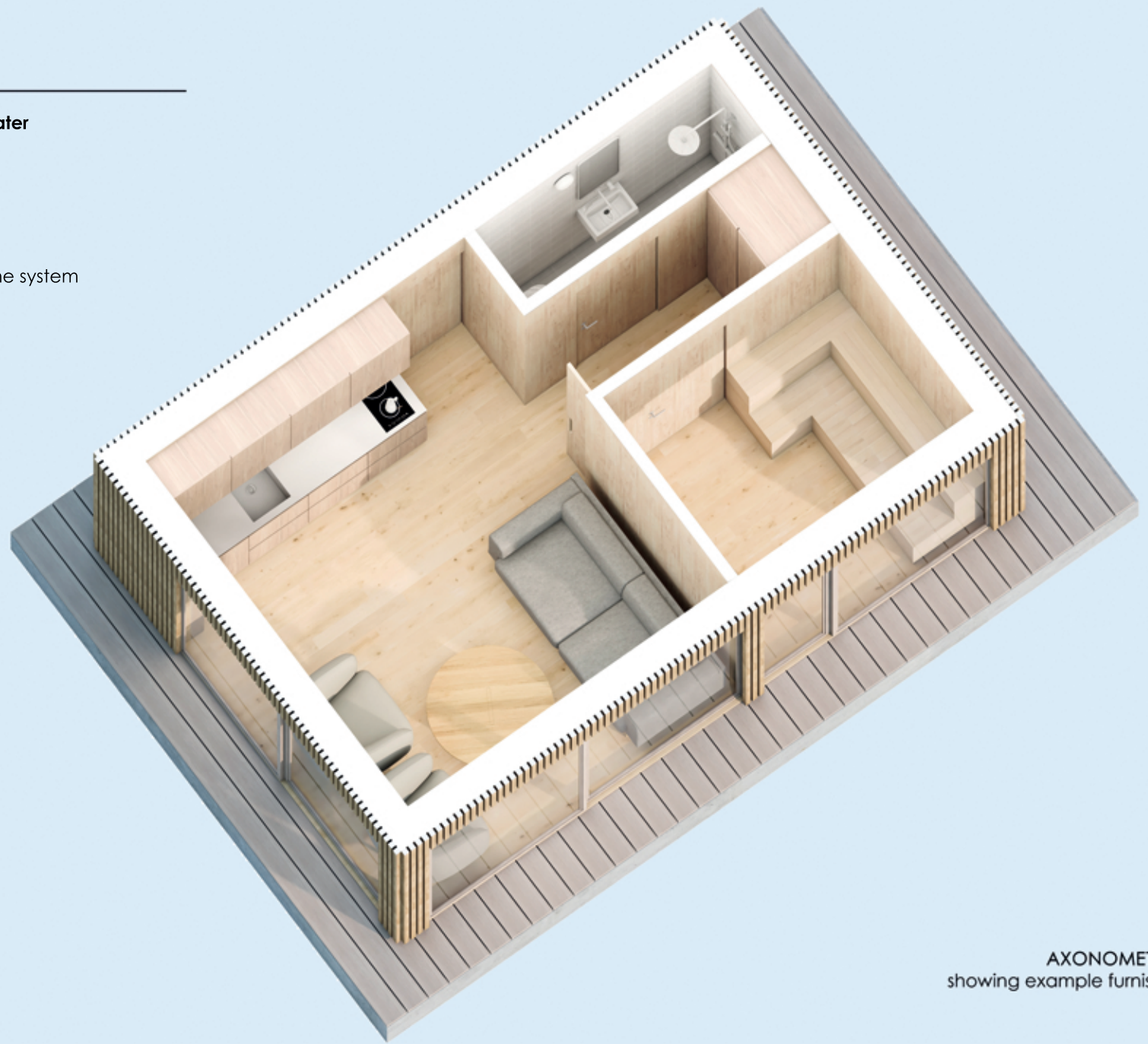
- life jackets
- Lifebuoy

Mooring equipment

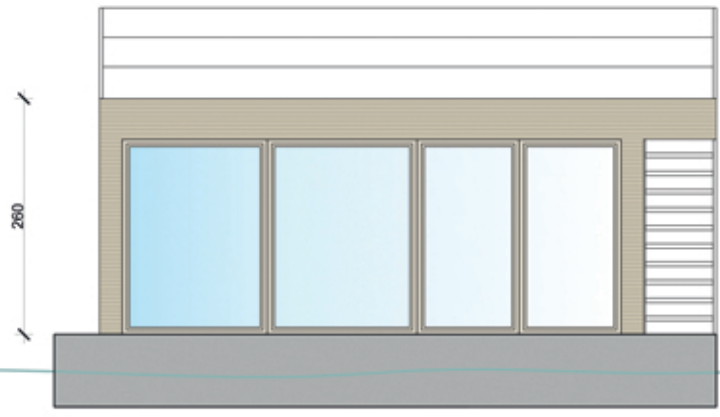
- mooring lines
- oar, fenders

Sauna room fittings:

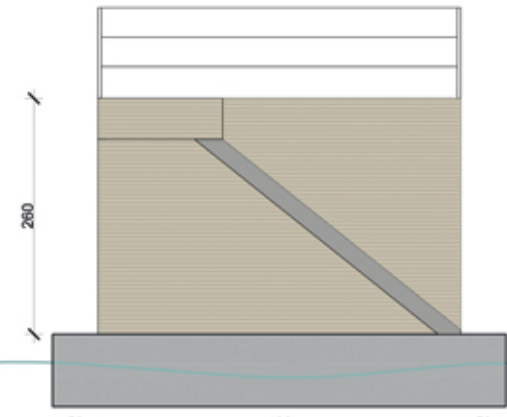
- wooden seats



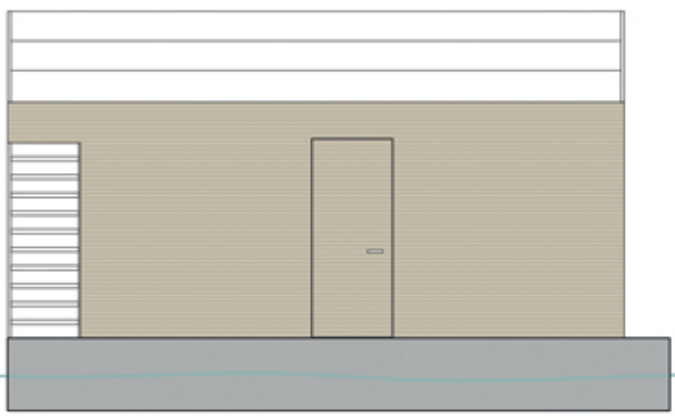
AXONOMETRIES
showing example furnishing



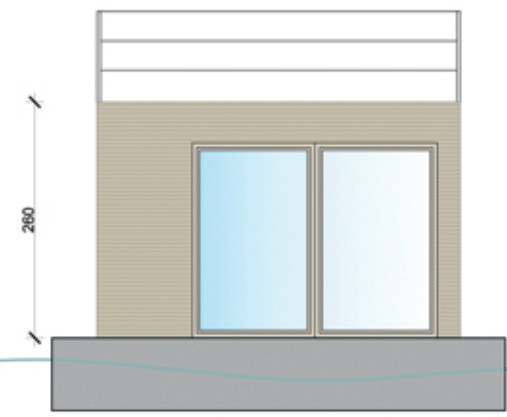
FRONT ELEVATION WITH A LAKE VIEW



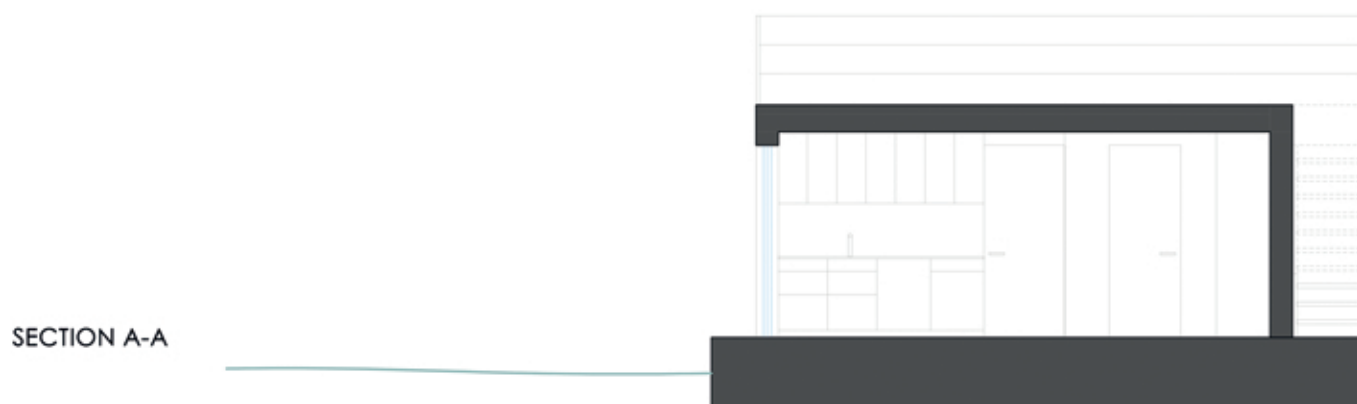
SIDE ELEVATION WITH STAIRS TO THE TERRACE



ELEVATION WITH ENTRANCE DOOR



SIDE ELEVATION



SECTION A-A

- +2.60
- - - +2.30
- - -
- +0.00
- - -
- 0.75
- - -