


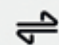




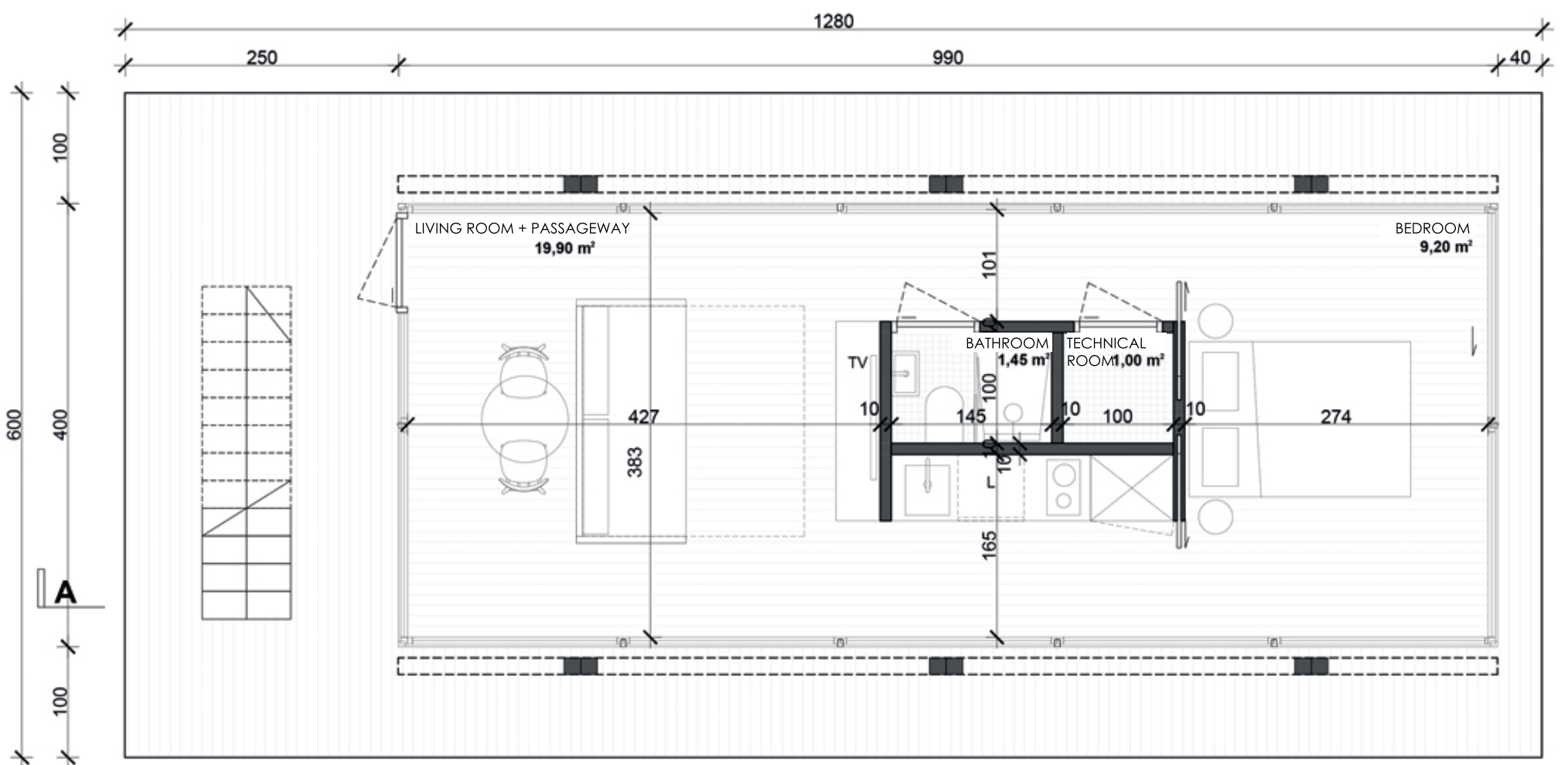
# MODERN I

## TECHNICAL INFORMATION

Platform	House	
<b>Length:</b> 12,8 m	<b>Length:</b> 9,9 m	<b>Number of places to sleep:</b> 4 (with the possibility of increasing)
<b>Width:</b> 6 m	<b>Width:</b> 4 m	<b>Terrace area:</b> 34 m <sup>2</sup>
<b>Height:</b> 0,75 m	<b>Area:</b> 39,6 m <sup>2</sup>	<b>Powierzchnia tarasu na dachu:</b> 21 m <sup>2</sup> (w opcji premium)
<b>Draught:</b> ca. 0,38 m	<b>Height:</b> 2,6 m	<b>Season of use:</b> all year
<b>Area:</b> 76,8 m <sup>2</sup>		

-  **STANDARD FURNISHING**
-  **PREMIUM FURNISHING**
-  **AUTONOMIC FURNISHING**
-  **MOBILE FURNISHING**

details available on the website [www.aqhome.pl](http://www.aqhome.pl)



STANDARD FURNISHING

**Containers**

for clean and waste water

**Installations**

floor heating  
hot water  
household batteries  
port connection with charger  
marine toilet with connection to the system

**Finishing**

interior floors  
exterior floor of the lower deck  
door and window joinery

**Belaying elements**

front and rear railings  
water ladder

**Fire extinguishing equipment**

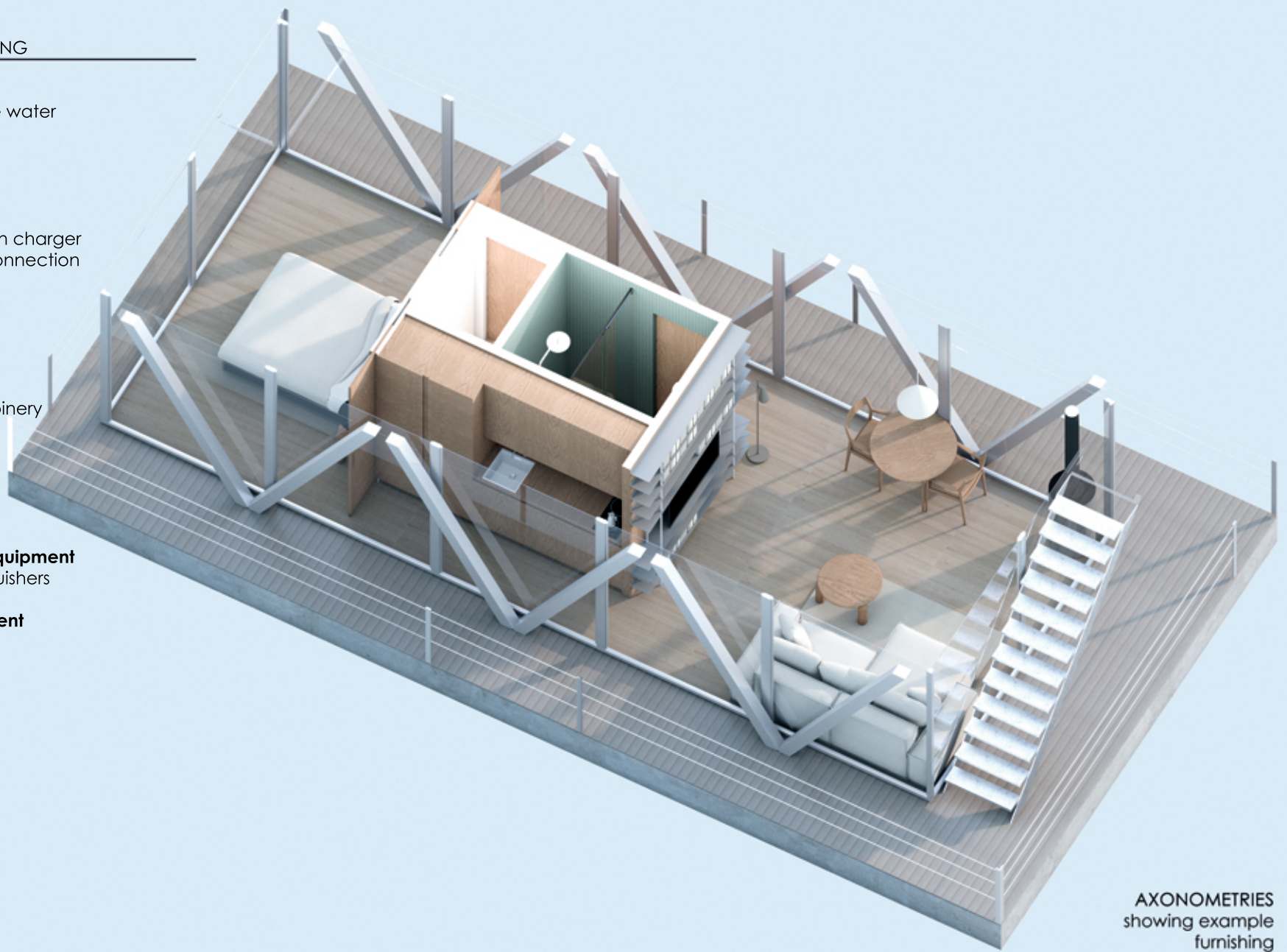
at least 2 fire extinguishers

**Live-saving equipment**

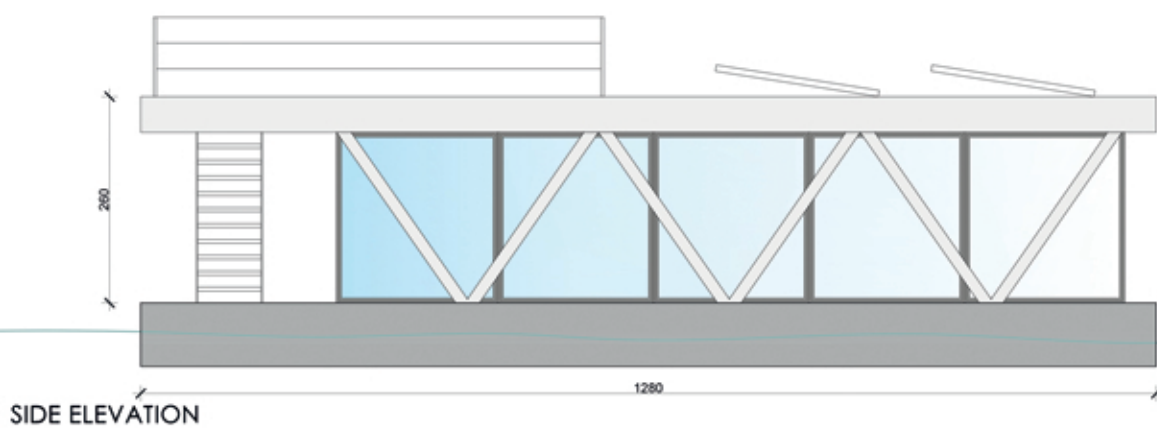
life jackets  
Lifebuoy

**Mooring equipment**

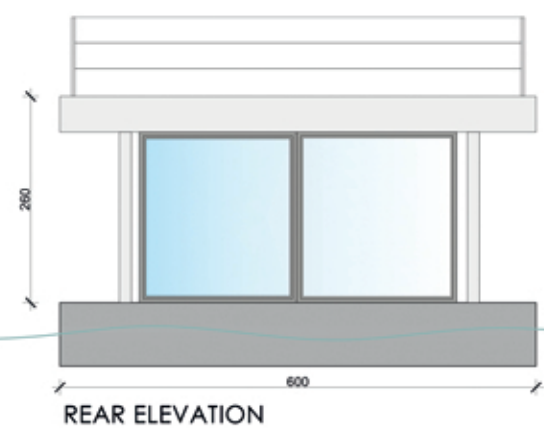
mooring lines  
oar  
fenders



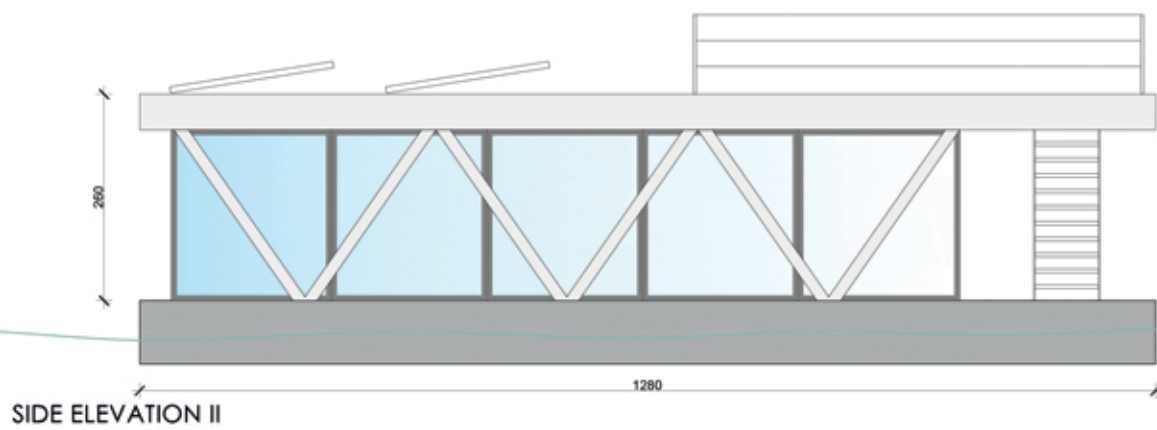
AXONOMETRIES showing example furnishing



SIDE ELEVATION



REAR ELEVATION



SIDE ELEVATION II



FRONT ELEVATION



SECTION A-A