


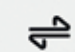




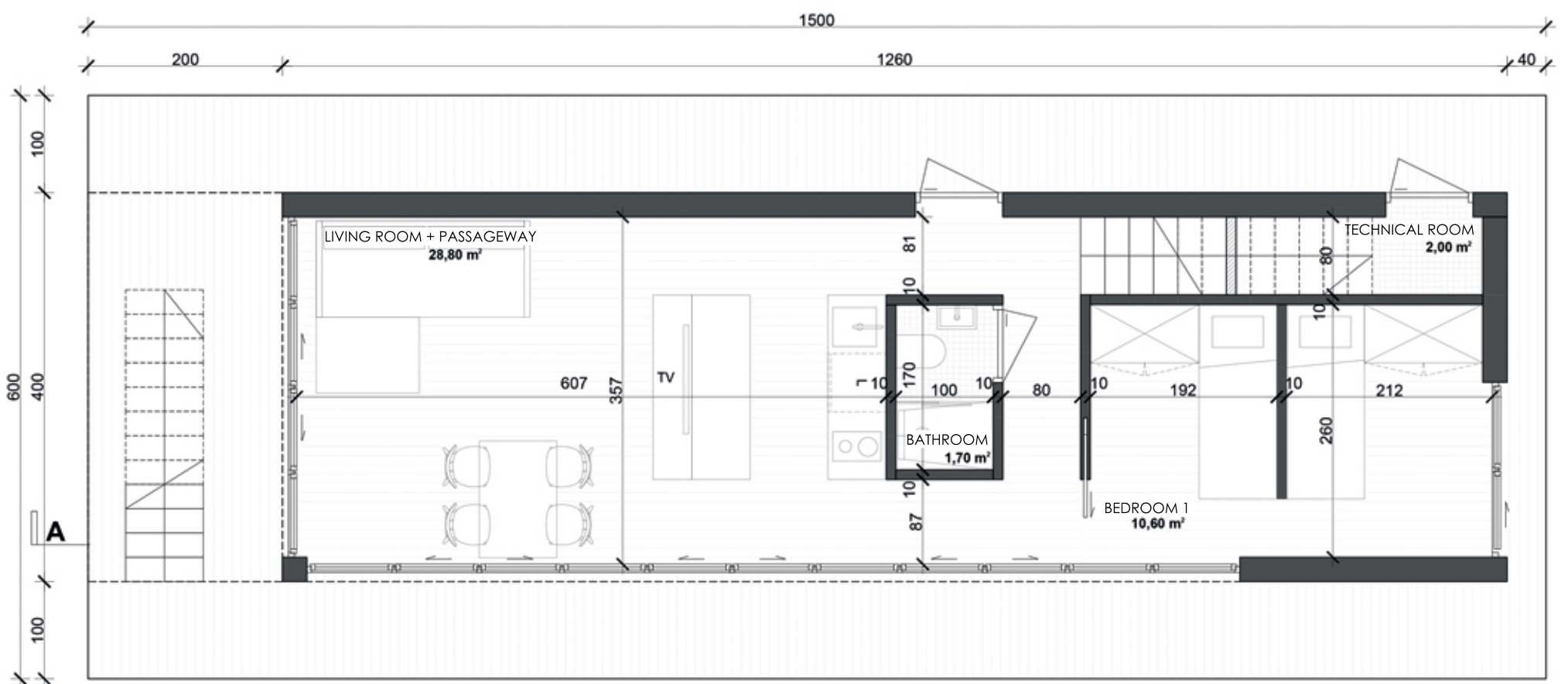
# SCANDI IV

## TECHNICAL INFORMATION

Platform	House	
<b>Length:</b> 15 m	<b>Length:</b> 12,6 m	<b>Number of places to sleep:</b> 10 (with the possibility of increasing)
<b>Width:</b> 6m	<b>Width:</b> 4 m	<b>Terrace area:</b> 38 m <sup>2</sup> + 27 m <sup>2</sup> (1st floor)
<b>Height:</b> 0,75 m	<b>Area:</b> 50,4 m <sup>2</sup>	<b>Roof terrace area:</b> 24 m <sup>2</sup> (in the premium option)
<b>Draught:</b> ca. 0,38 m	<b>Height:</b> 4,95 m	<b>Season of use:</b> all year
<b>Area:</b> 90 m <sup>2</sup>		

-  **STANDARD FURNISHING**
-  **PREMIUM FURNISHING**
-  **AUTONOMIC FURNISHING**
-  **MOBILE FURNISHING**

details available on the website [www.aqhome.pl](http://www.aqhome.pl)

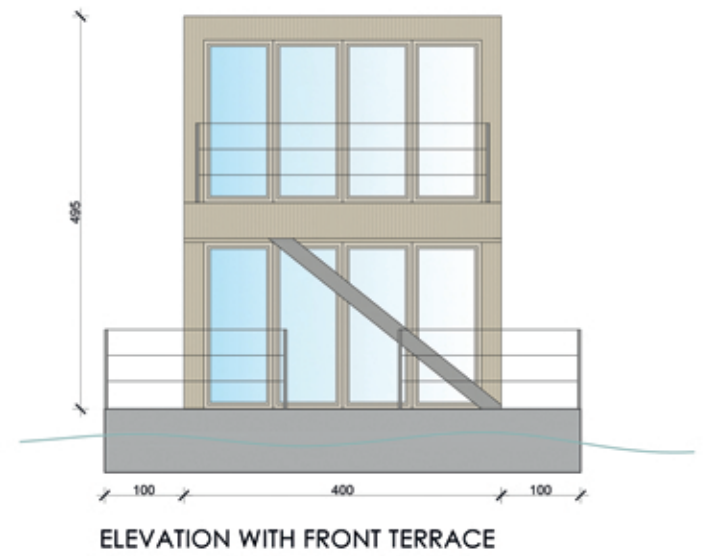
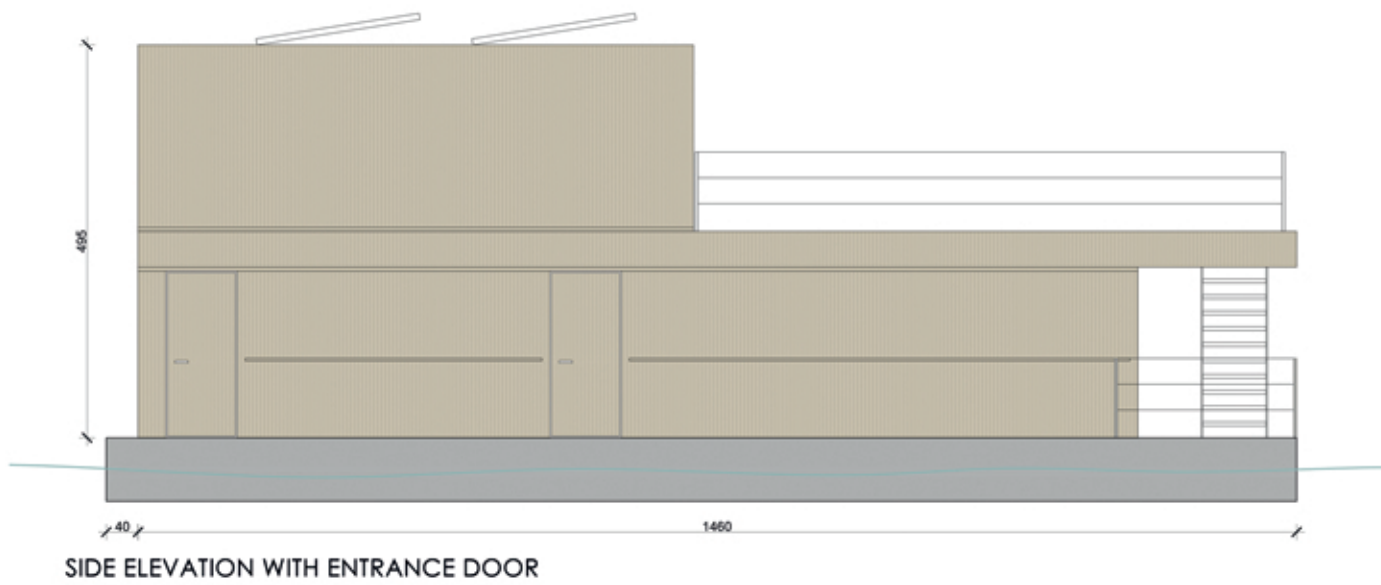
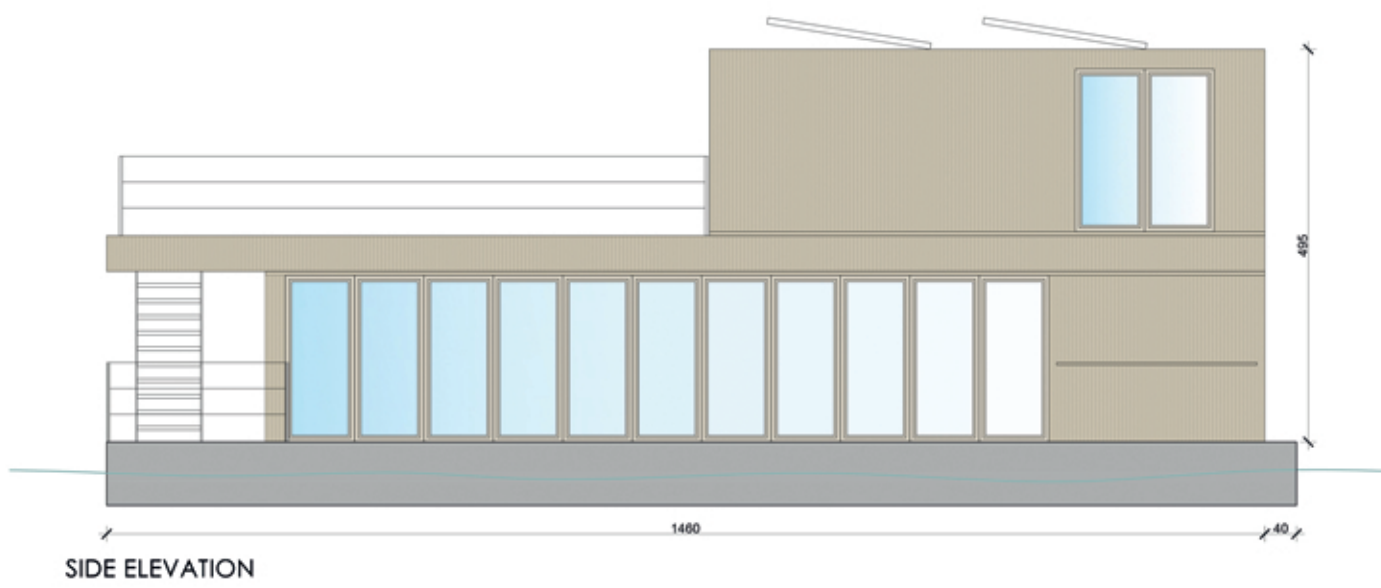
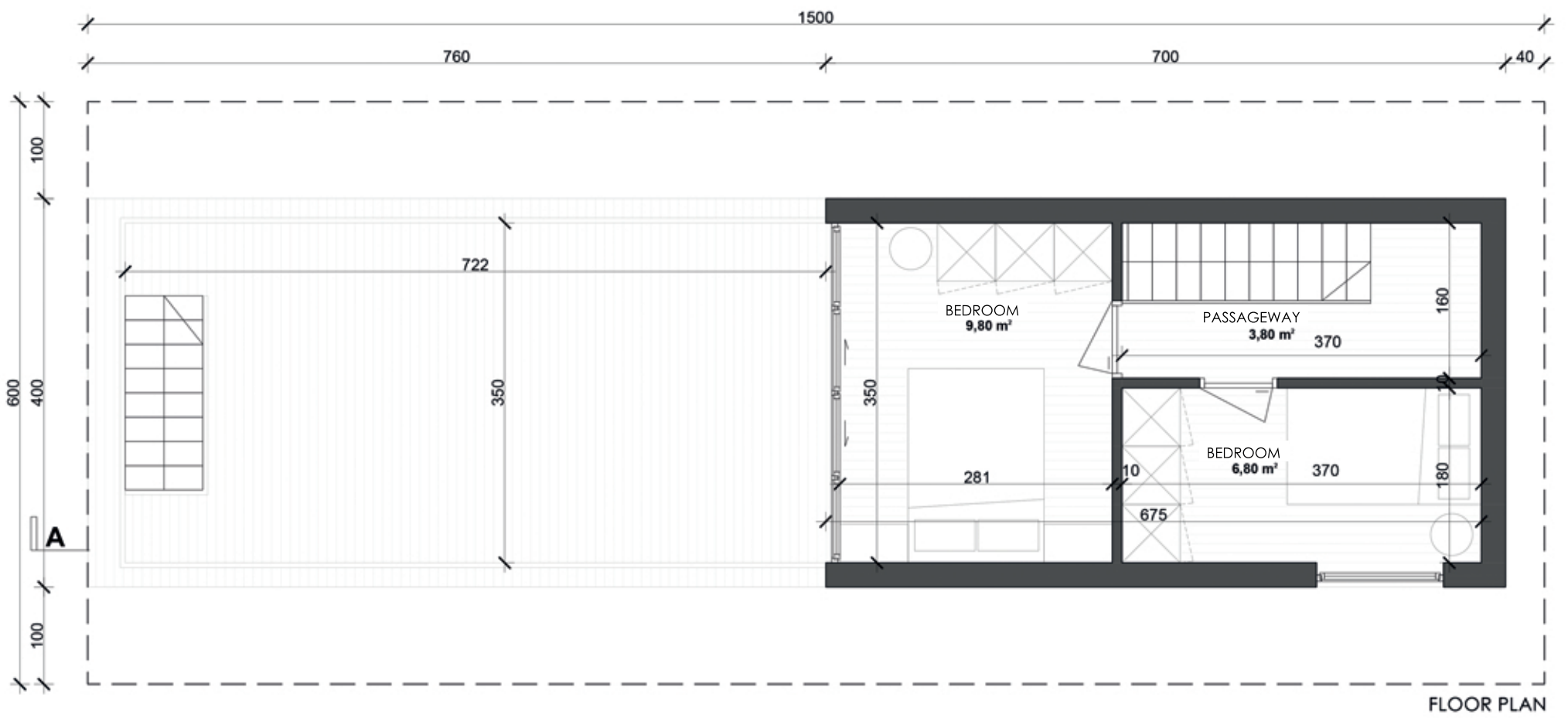


GROUND FLOOR PLAN



DESIGNALL LLC Group  
36, Świerkowa Str., 10-174 Olsztyn  
kontakt@designall.pl, tel. +48 791 501 502







STANDARD FURNISHING

**Containers**

for clean and waste water

**Installations**

floor heating  
hot water  
household batteries  
port connection with charger  
marine toilet with connection to the system

**Finishing**

interior floors  
exterior floor of the lower deck  
door and window joinery

**Belaying elements**

front and rear railings  
water ladder

**Live-saving equipment**

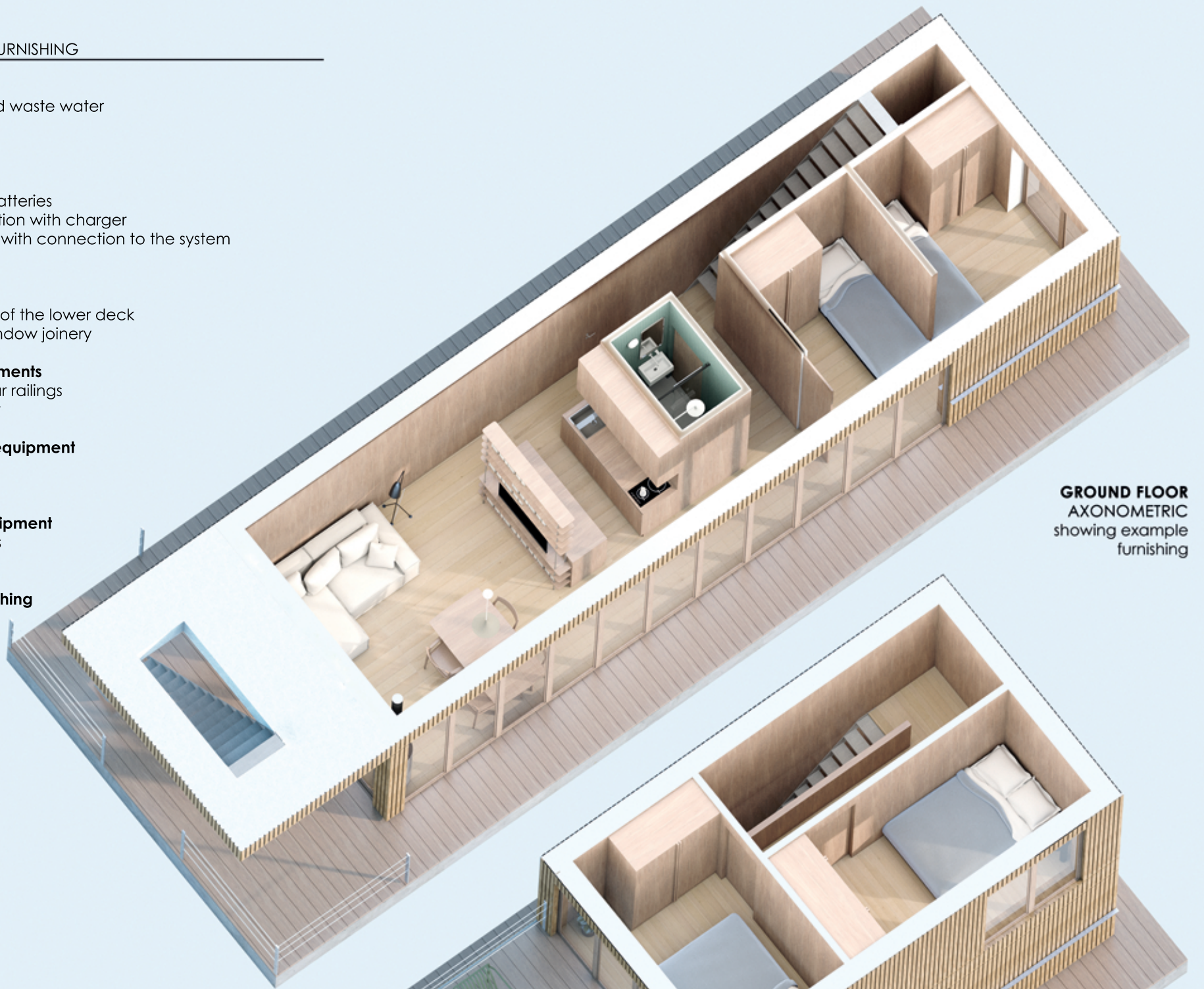
life jackets  
Lifebuoy

**Mooring equipment**

mooring lines  
oar, fenders

**Fire extinguishing equipment**

at least 2 fire extinguishers



**GROUND FLOOR**  
AXONOMETRIC  
showing example  
furnishing



**FLOOR**  
AXONOMETRIC  
showing example  
furnishing

